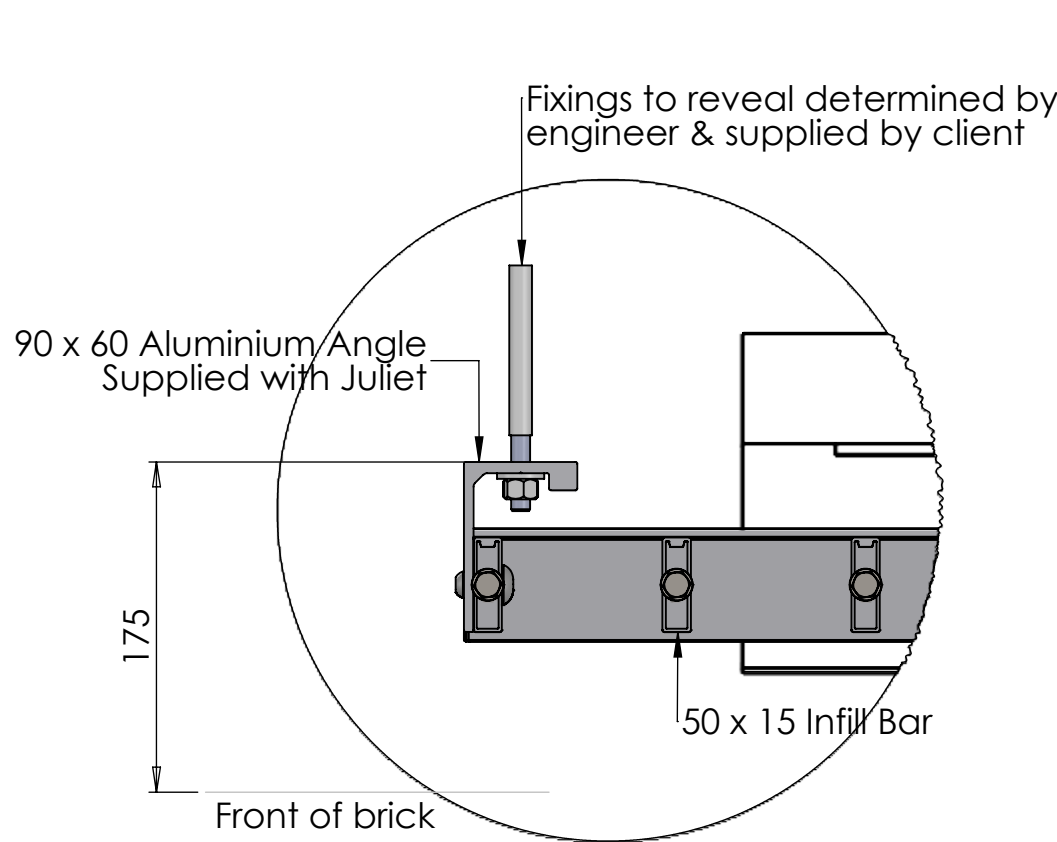
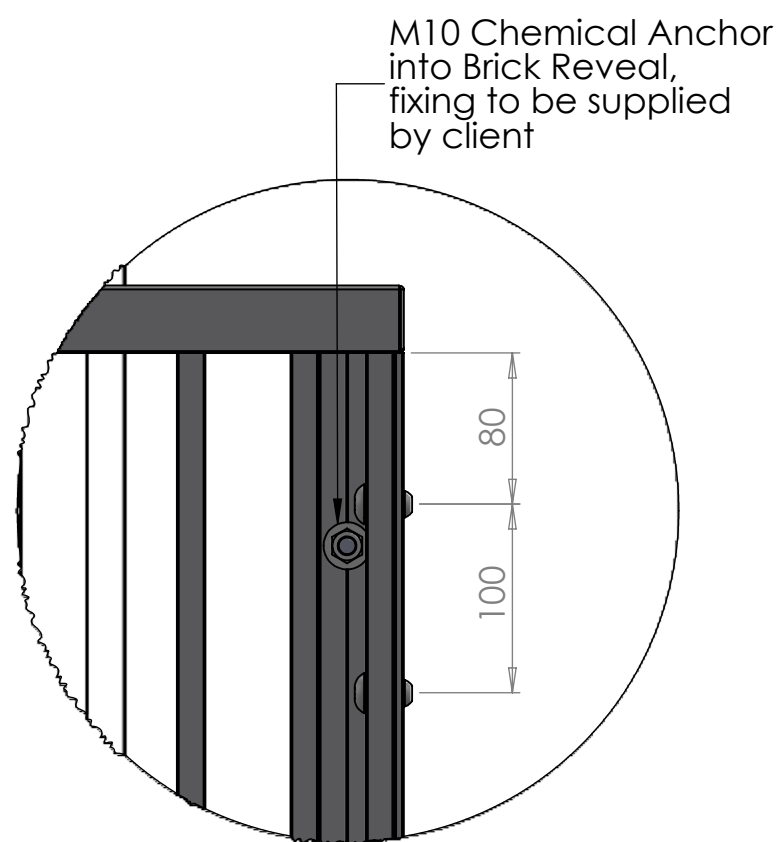


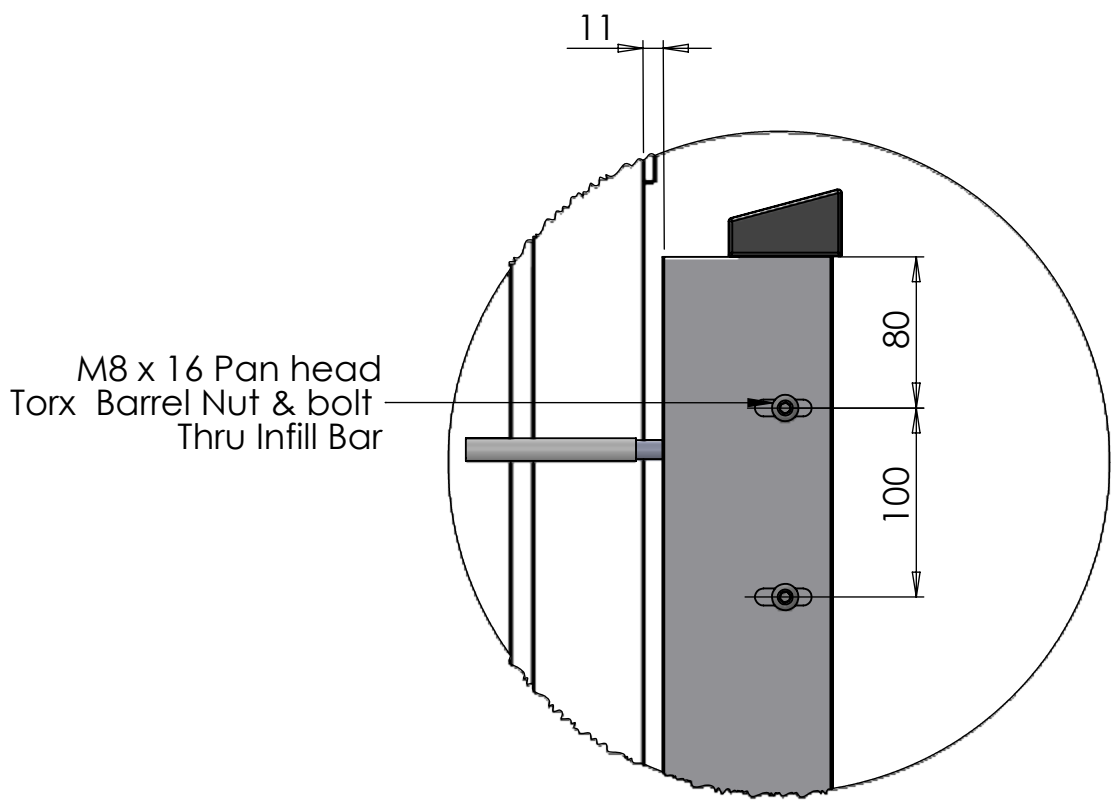
TOP VIEW  
SCALE 1 : 8



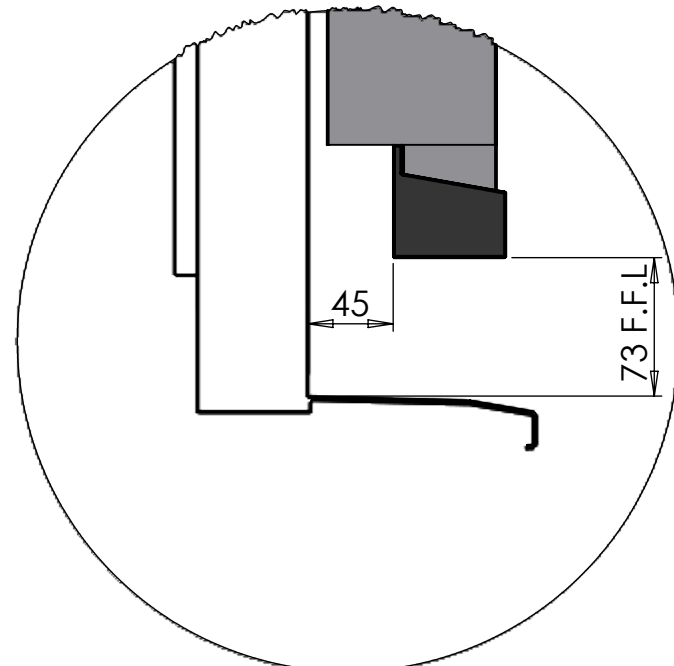
DETAIL A  
SCALE 1 : 4



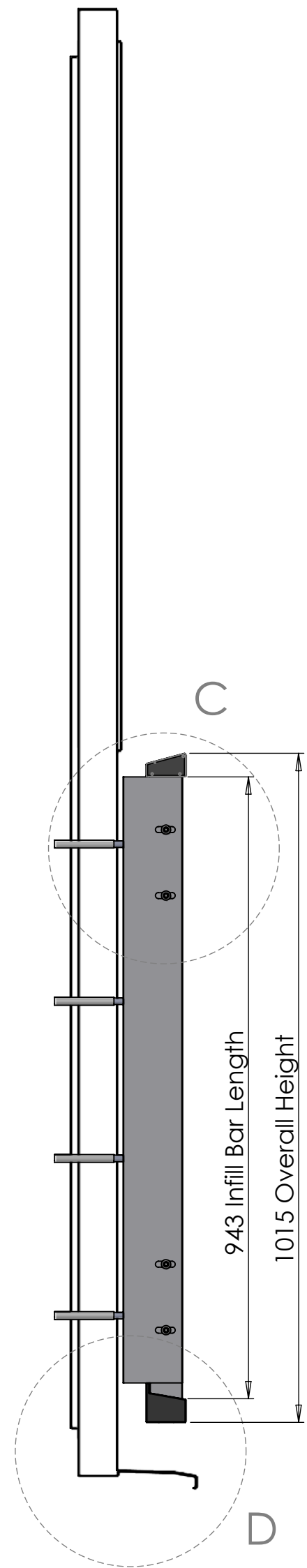
DETAIL B  
SCALE 1 : 4



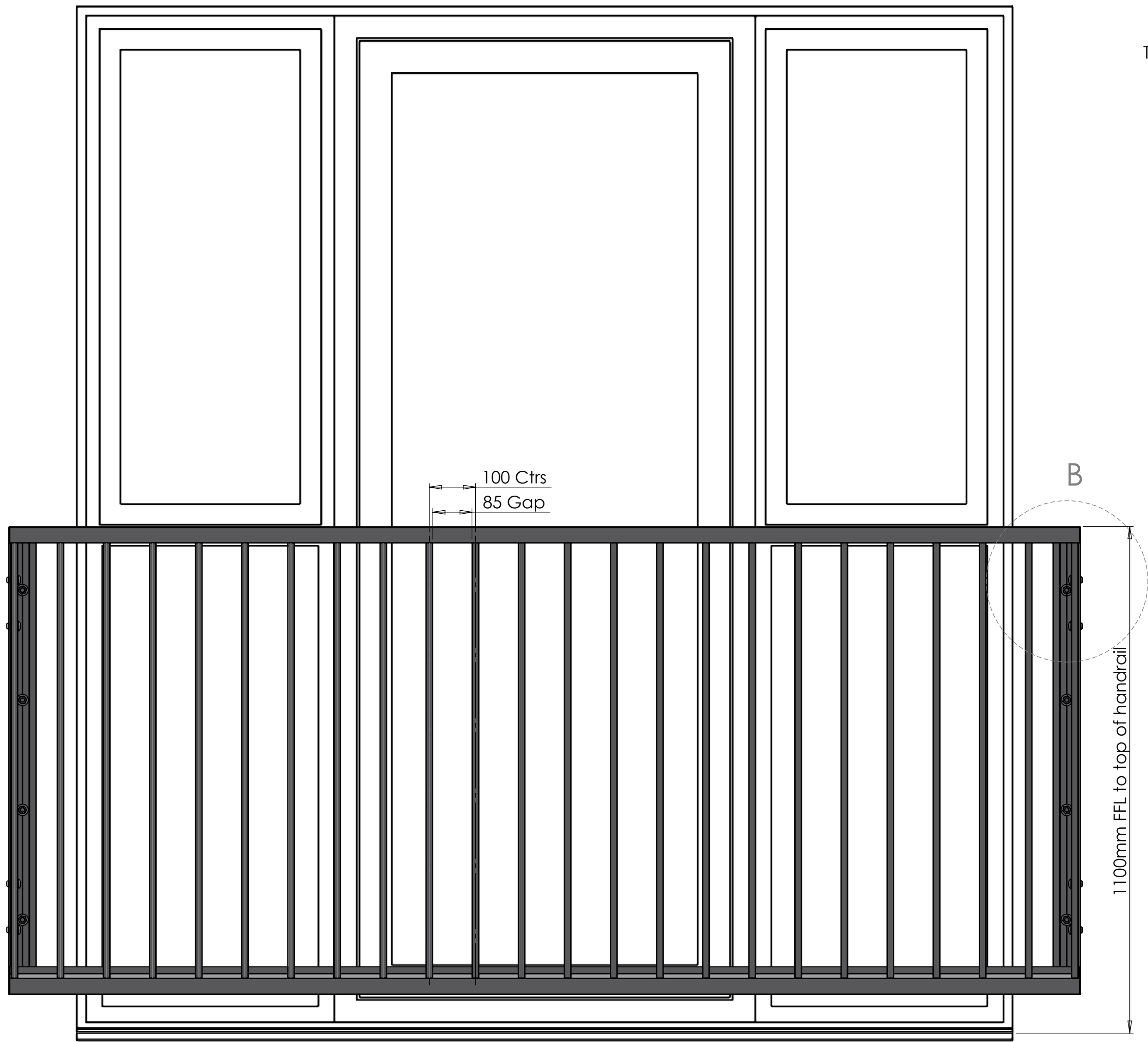
DETAIL C  
SCALE 1 : 4



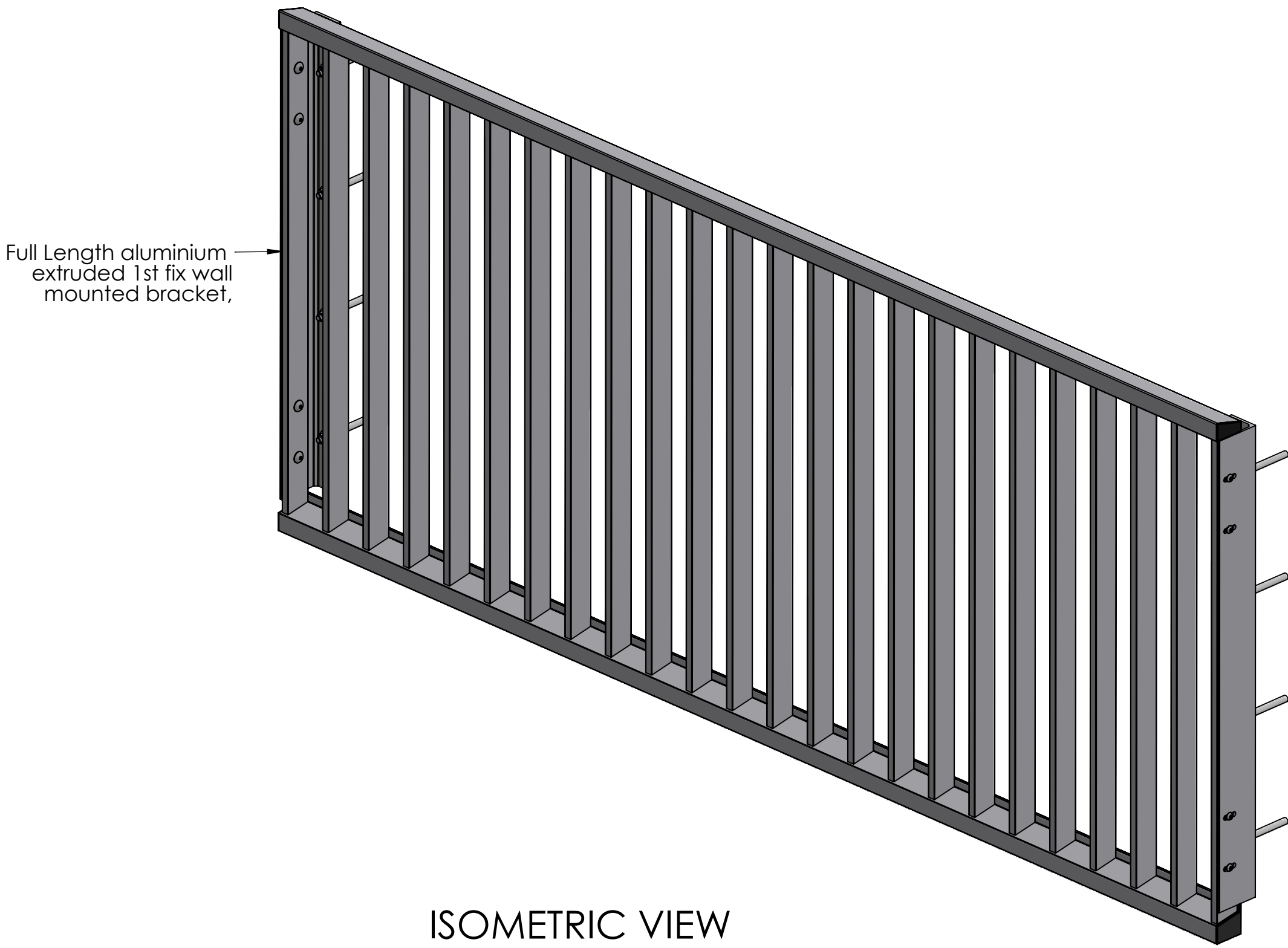
DETAIL D  
SCALE 1 : 4



SIDE VIEW  
SCALE 1 : 8



FRONT VIEW  
SCALE 1 : 8



ISOMETRIC VIEW  
SCALE 1 : 8

**Important Statement:**  
All Metalwork is Part of EXC 2 in accordance with BS EN 1090-2 & BS EN ISO 15609.  
1. All design is to be checked & confirmed by the Architect / Main Contractor and verified on site before commencing any work.  
2. This drawing is to be read in conjunction with all other relevant Engineer's & Architect's drawings & specifications for the project.  
3. Drawing is not to be scaled. Use figured dimensions. Actual dimensions may vary on site.

**Fabrication Tolerances:**  
1. Alignment +/- 2mm.  
2. Hole Ovalisation +/- 1mm.  
3. Section Deviation +/- 1mm over 1m span section.  
4. Site Erection Tolerance for fabrication +/- 2mm.  
5. Welding works to be per welding procedure spec.  
6. All finished items are to be part marked & Stamped.  
7. Always follow the instructions in manufacture's installation spec.  
8. All sharp edges to be removed before site installation.

**Materials:**  
Aluminium 6005A  
Aluminium 6063 T6

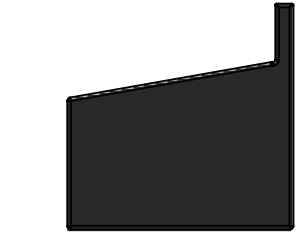
**Finishes:**  
PPC RAL ----- - 30% Gloss



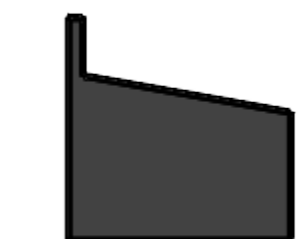
LH Handrail End Cap



RH Handrail End Cap



LH Basetrack End Cap



RH Basetrack End Cap



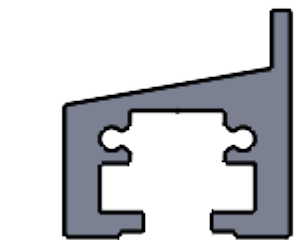
HCa - 60 x 35mm Handrail Capping



HBa - 50mm Handrail Carrier



IBa - 50 x 15mm Infill Bar



BTa - 60 x 60mm Base Track

101	Initial Issue	LST	20/05/25
Rev	Reason for Issue	Drawn	Date
Client:		Project:	

Drawing Title:  
Vantage Vertical Juliet Guarding  
-Façade Face Fix

Drawn By: LST Scale: NTS Dwg Size: A1 Date: 20/05/25  
Drawing Number: JUL-VVJ-FF-DR-002 Revision: 101

DWG Status  
Information  
If in doubt ask